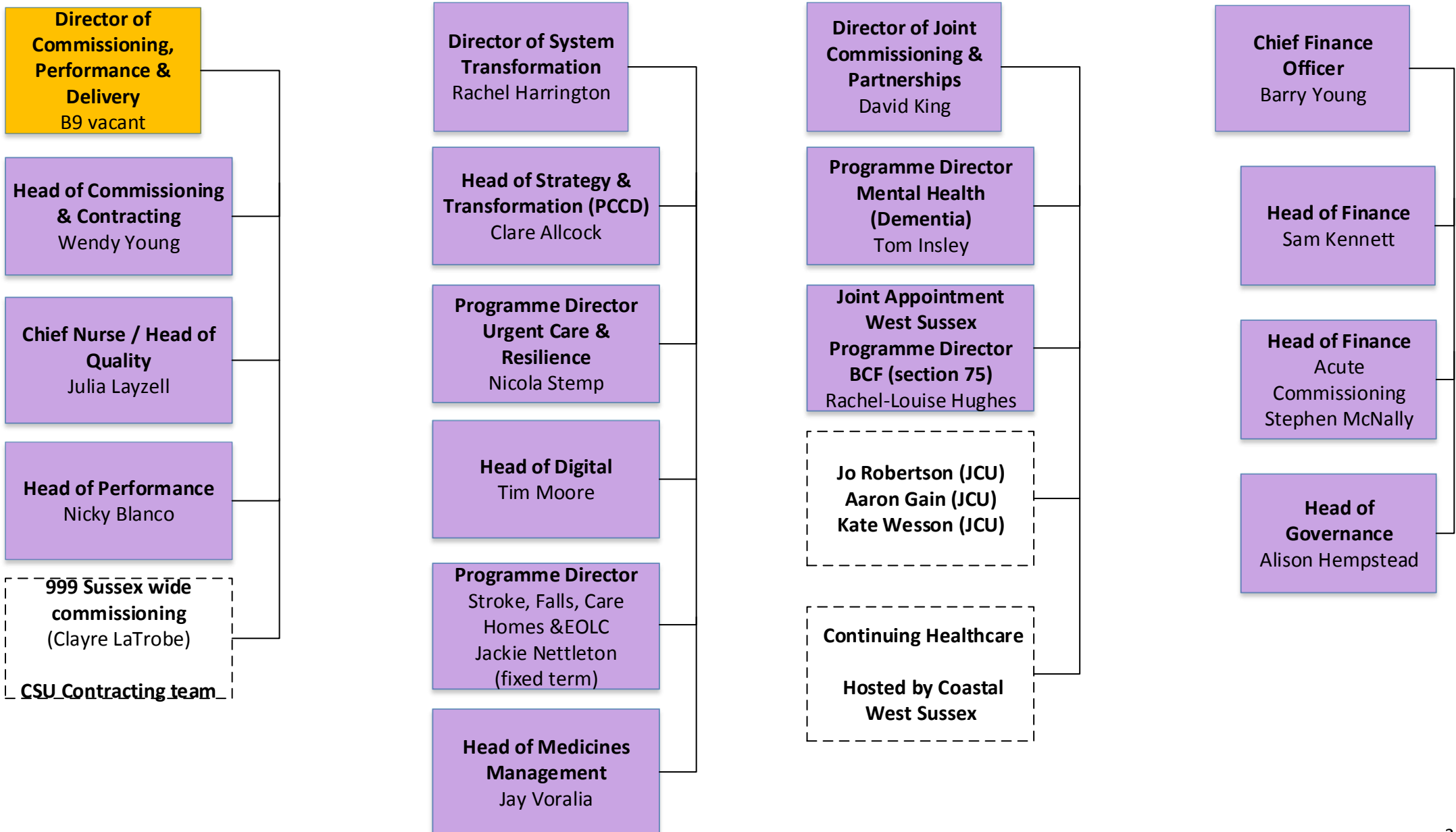


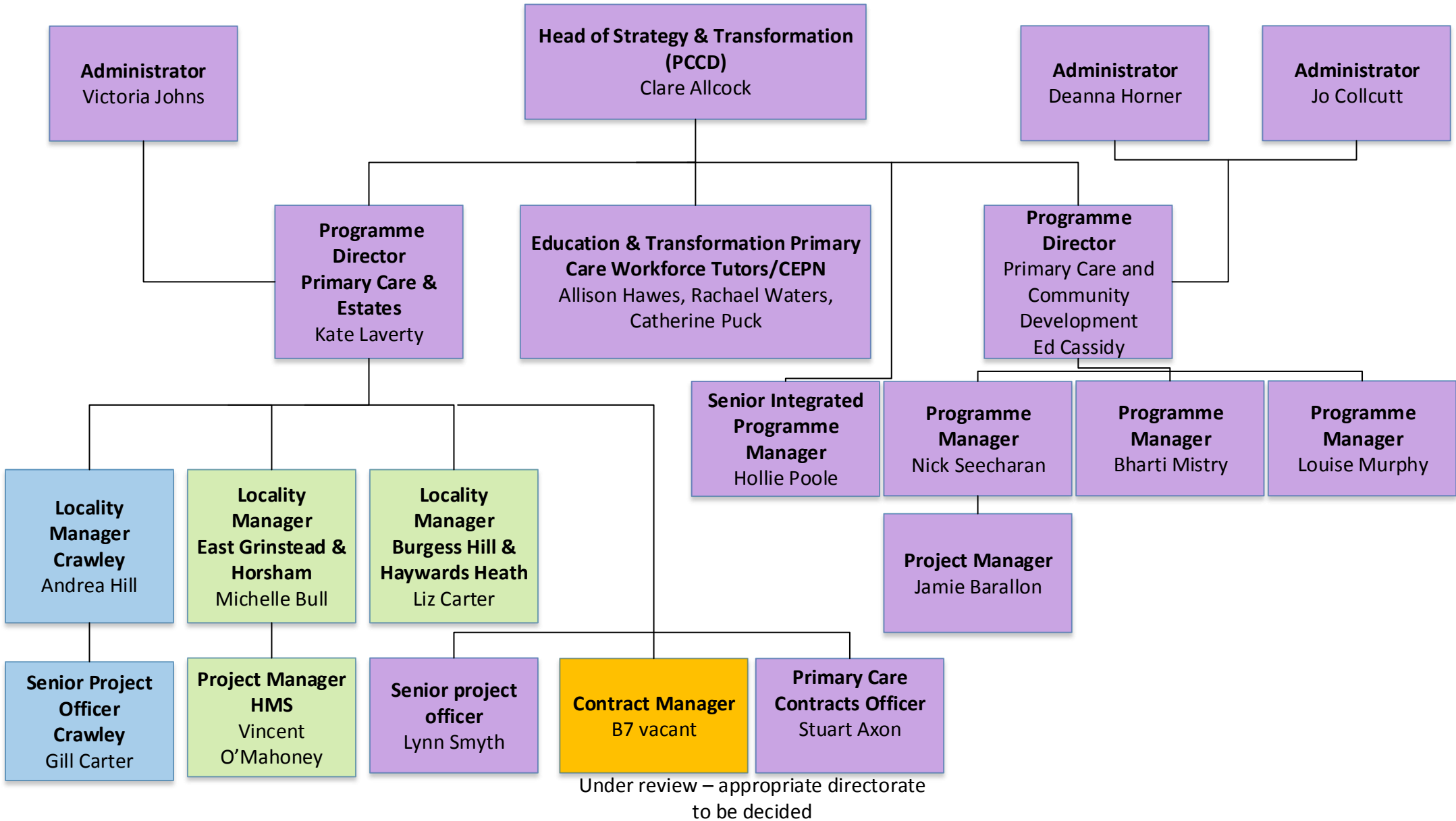
**Crawley & Horsham and Mid Sussex CCGs**

**Staff Key:**  
 Crawley CCG: Blue  
 HMS CCG: Green  
 Joint CCG: Purple  
 Vacancies / New posts: Orange



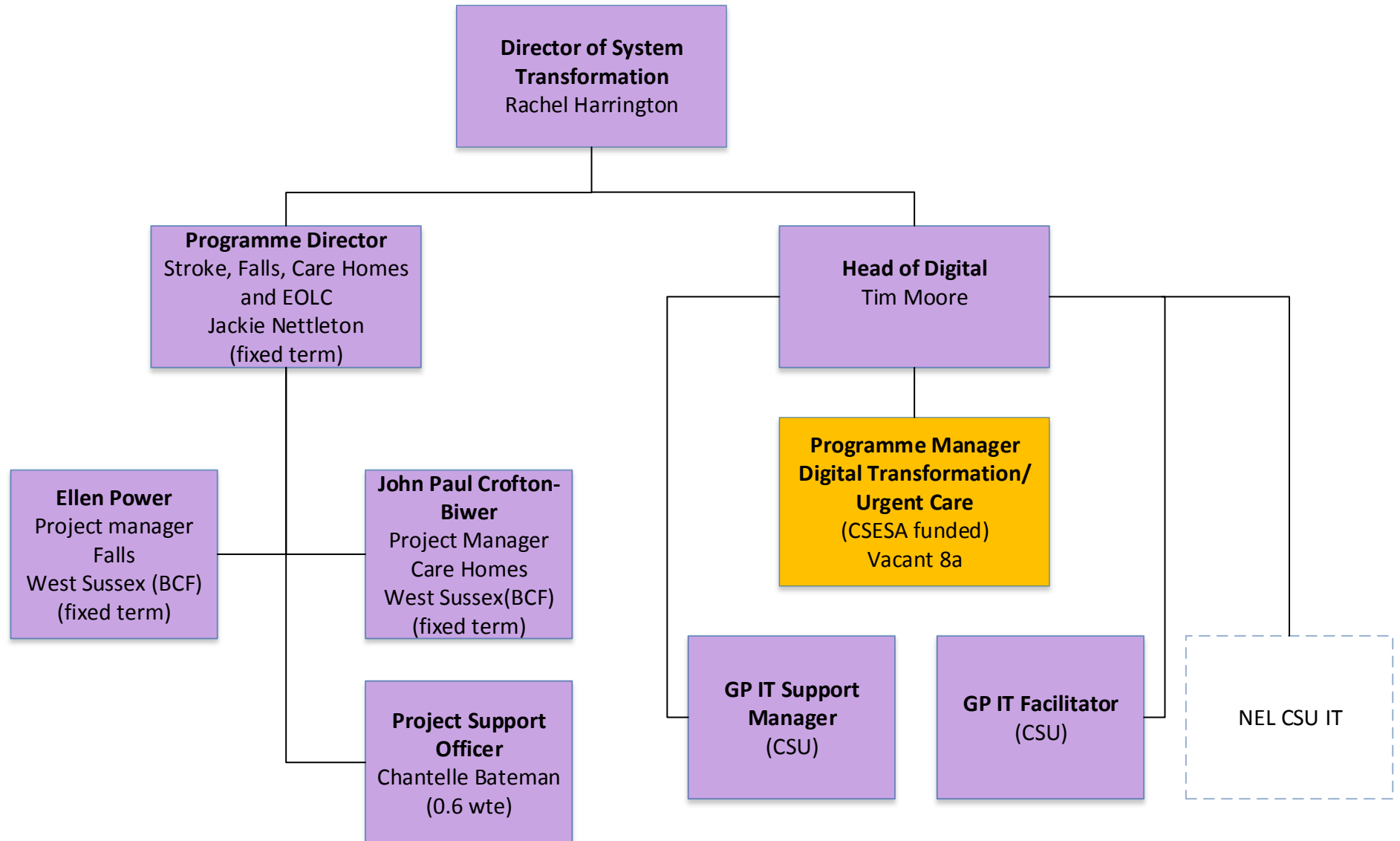
# Strategy & Transformation (PCCD) Structure – SRO Rachel Harrington

**Staff Key:**  
 Crawley CCG: Blue  
 HMS CCG: Green  
 Joint CCG: Purple  
 Vacancies/New posts: Orange



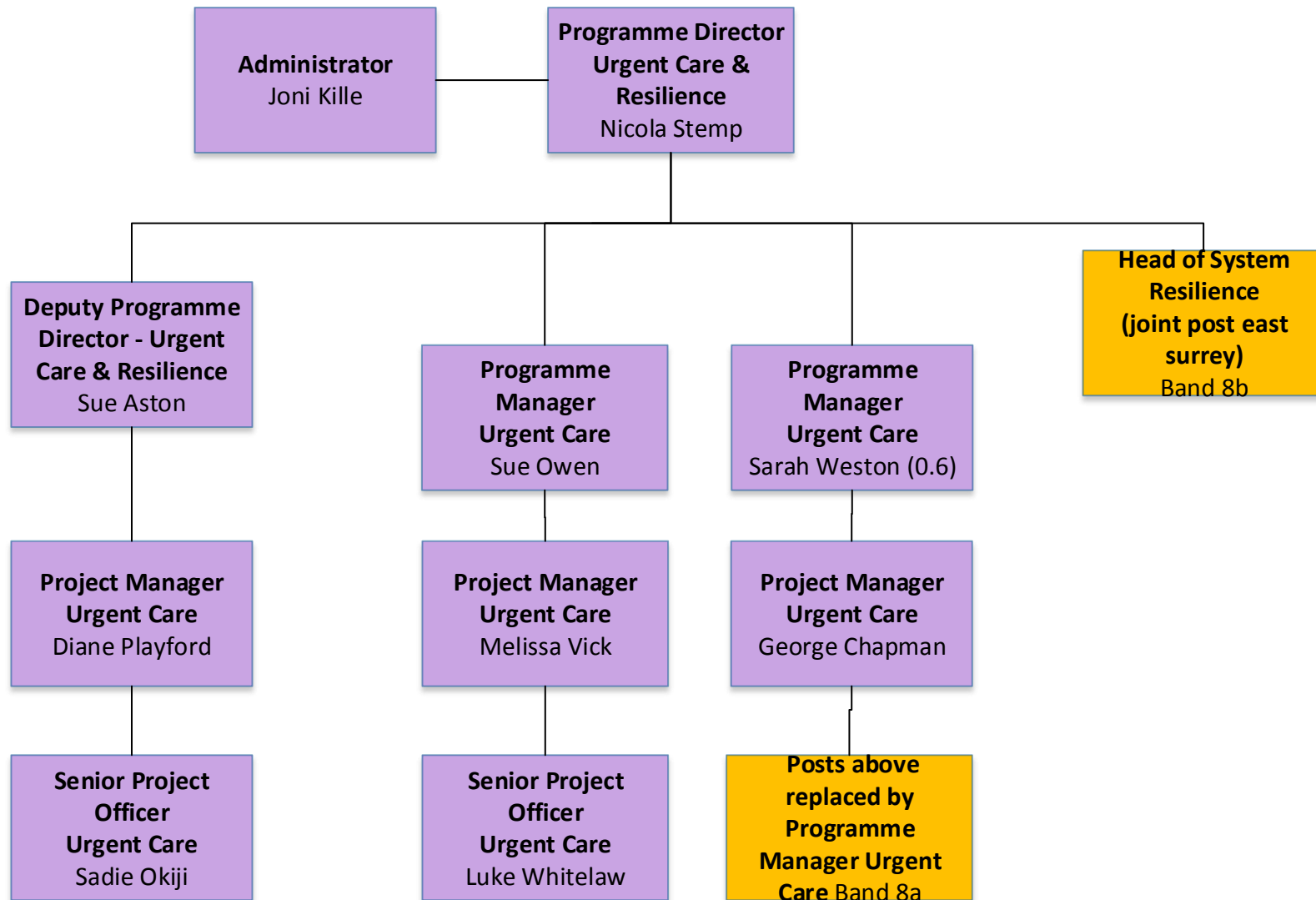
# Strategy & Transformation Structure – SRO Rachel Harrington

Staff Key:  
Crawley CCG: Blue  
HMS CCG: Green  
Joint CCG: Purple  
Vacancies/New posts: Orange



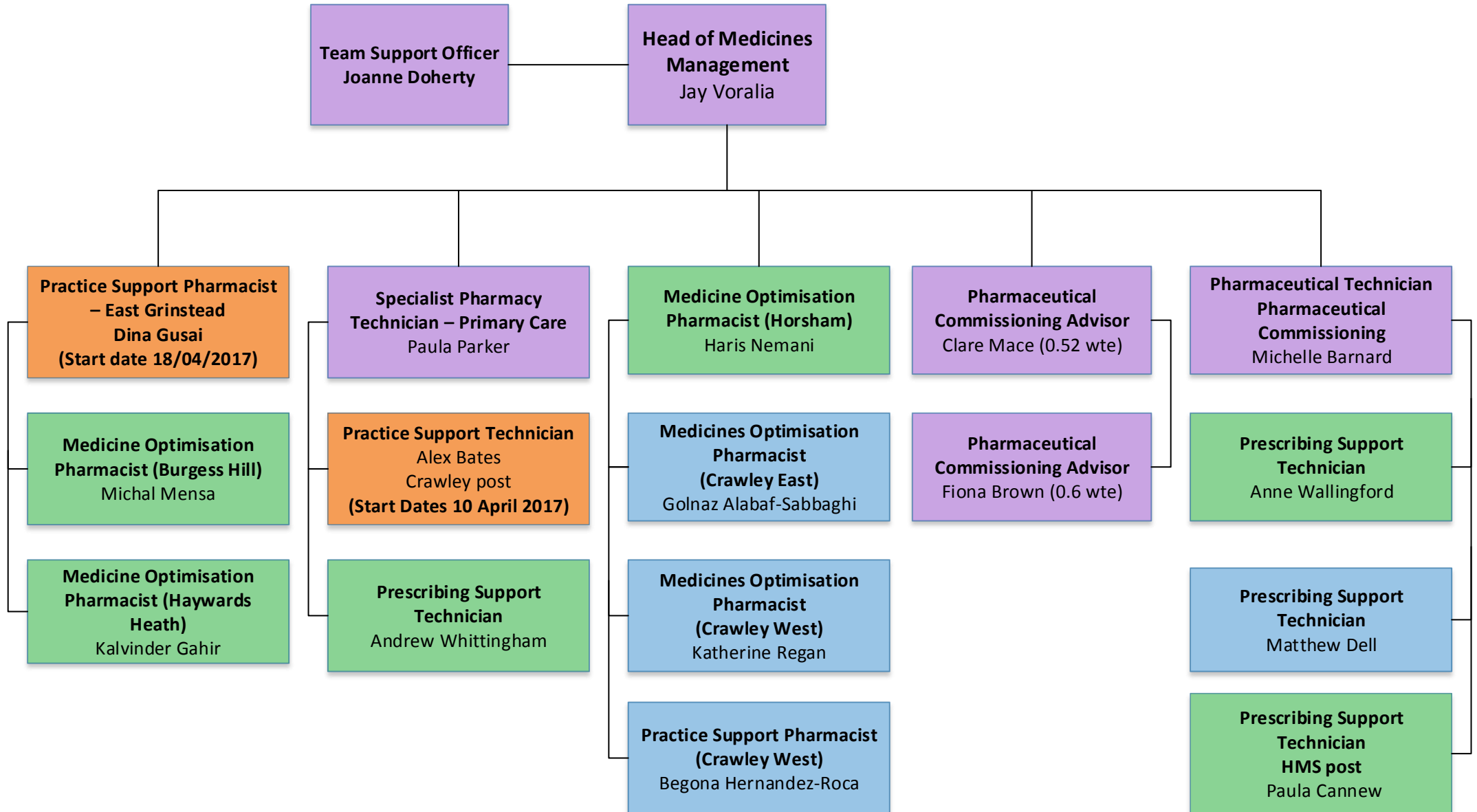
# Urgent Care & System Resilience – SRO Rachel Harrington

Staff Key:  
Crawley CCG: Blue  
HMS CCG: Green  
Joint CCG: Purple  
Vacancies/New posts: Orange



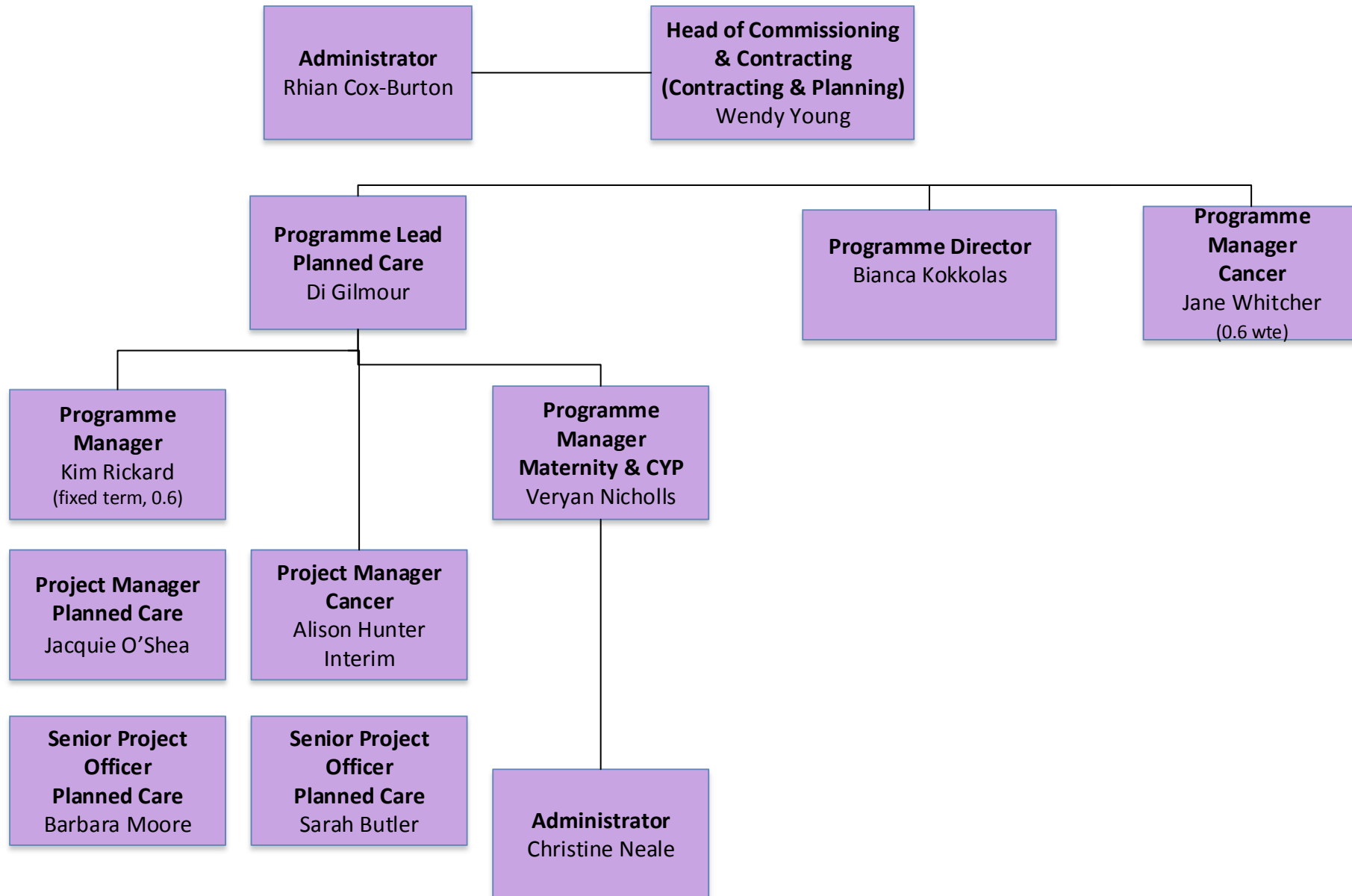
# Medicines Management Structure SRO Rachel Harrington

**Staff Key:**  
 Crawley CCG: Blue  
 HMS CCG: Green  
 Joint CCG: Purple  
 Vacancies/New posts: Orange



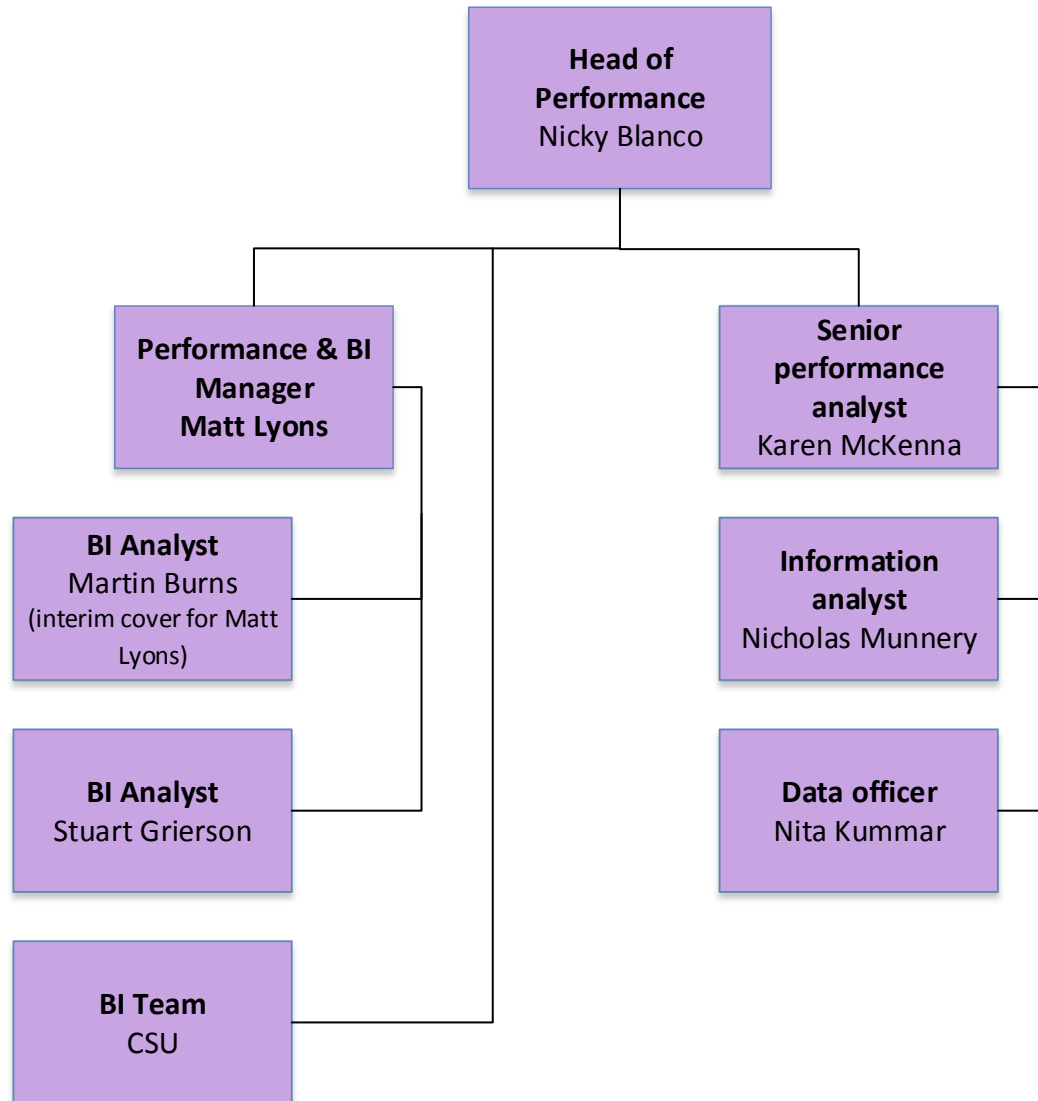
**Commissioning & Contracting Structure – SRO Director  
Commissioning, Performance & Delivery**

**Staff Key:**  
 Crawley CCG: Blue  
 HMS CCG: Green  
 Joint CCG: Purple  
 Vacancies/New posts: Orange



**Performance Structure**  
**PMO structure SRO Director Commissioning, Performance**  
**& Delivery**

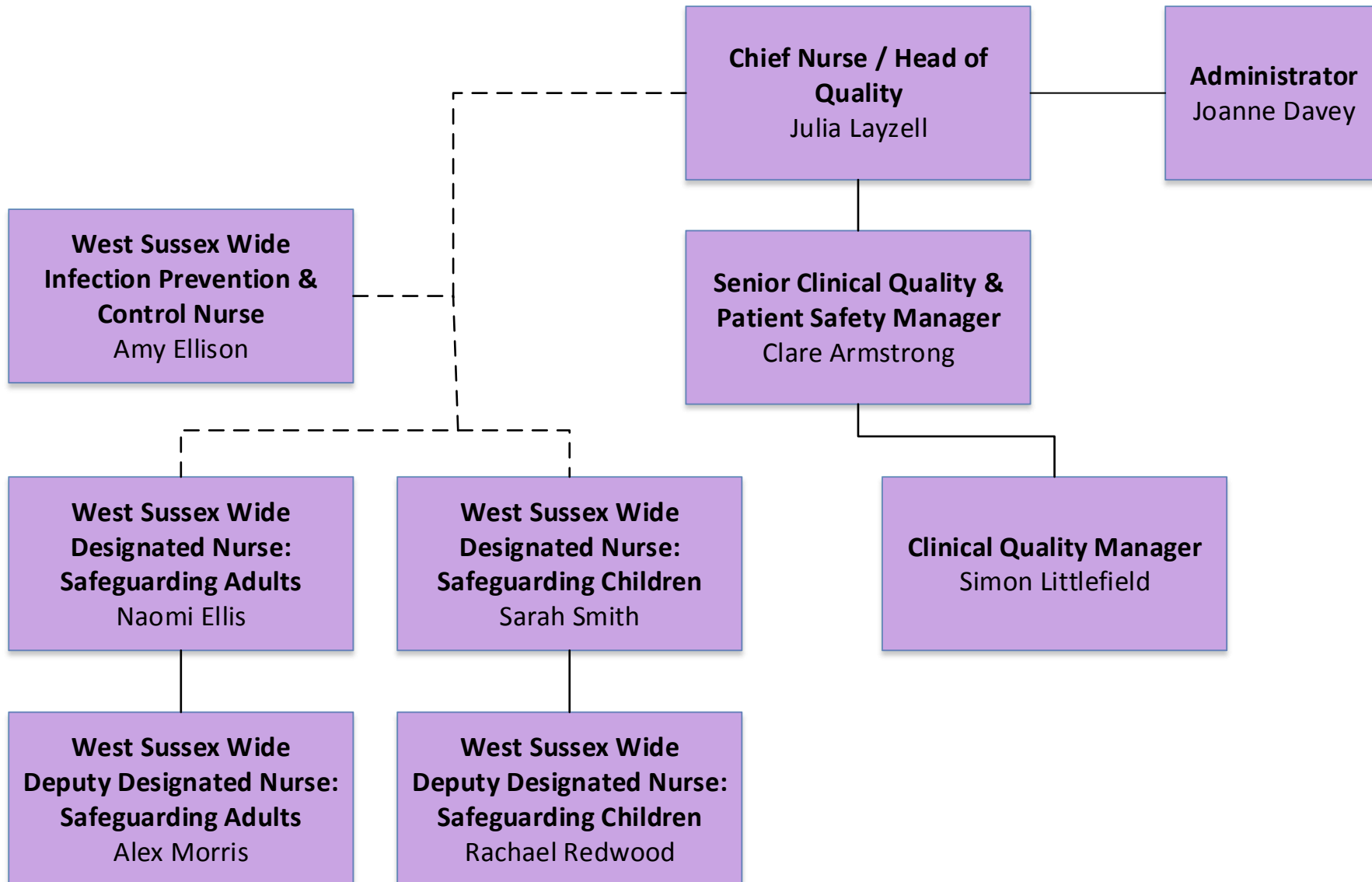
**Staff Key:**  
Crawley CCG: Blue  
HMS CCG: Green  
Joint CCG: Purple  
Vacancies/New posts: Orange





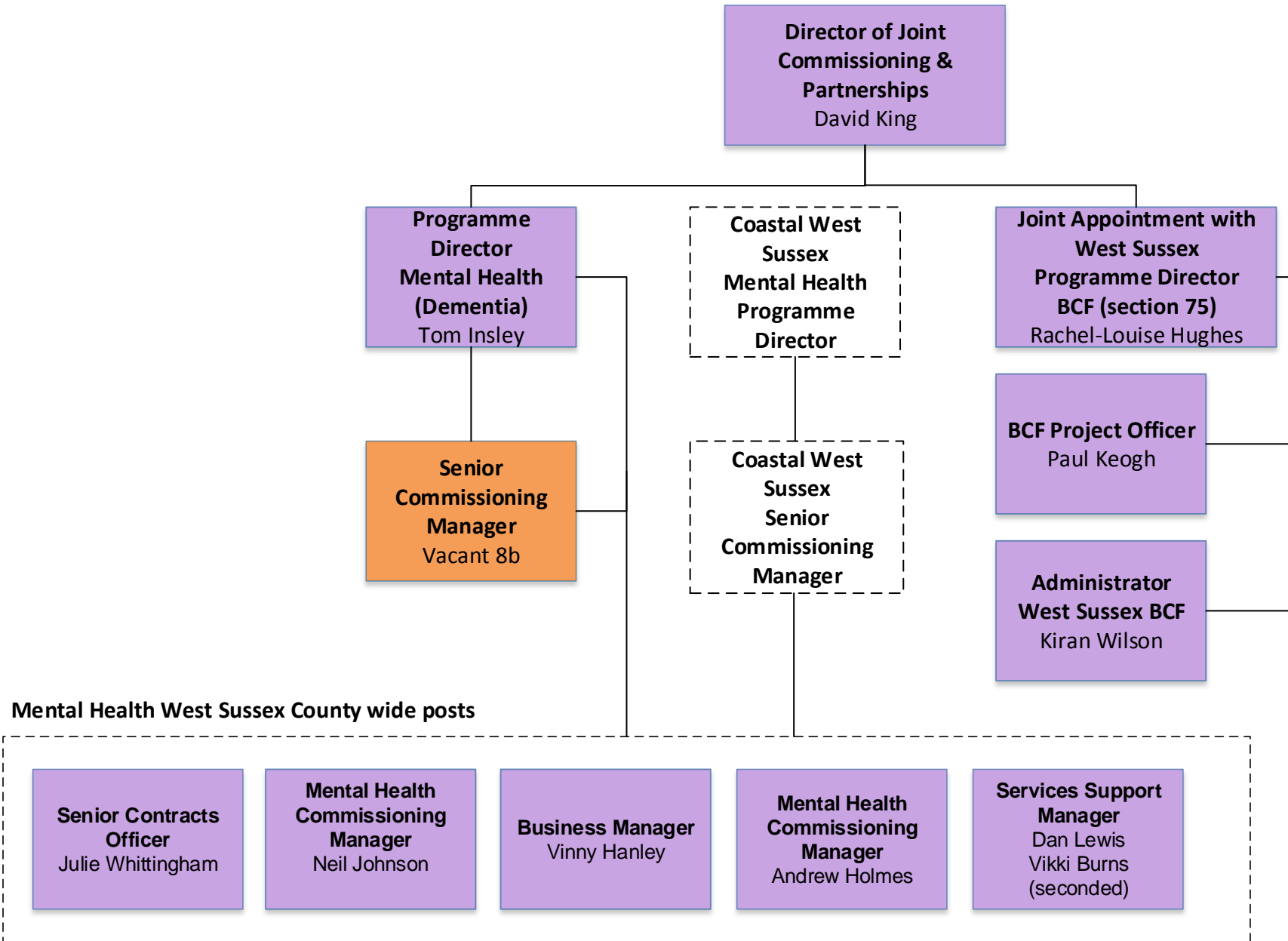
# Quality Structure SRO Director Commissioning, Performance & Delivery

**Staff Key:**  
Crawley CCG: Blue  
HMS CCG: Green  
Joint CCG: Purple  
Vacancies/New posts: Orange



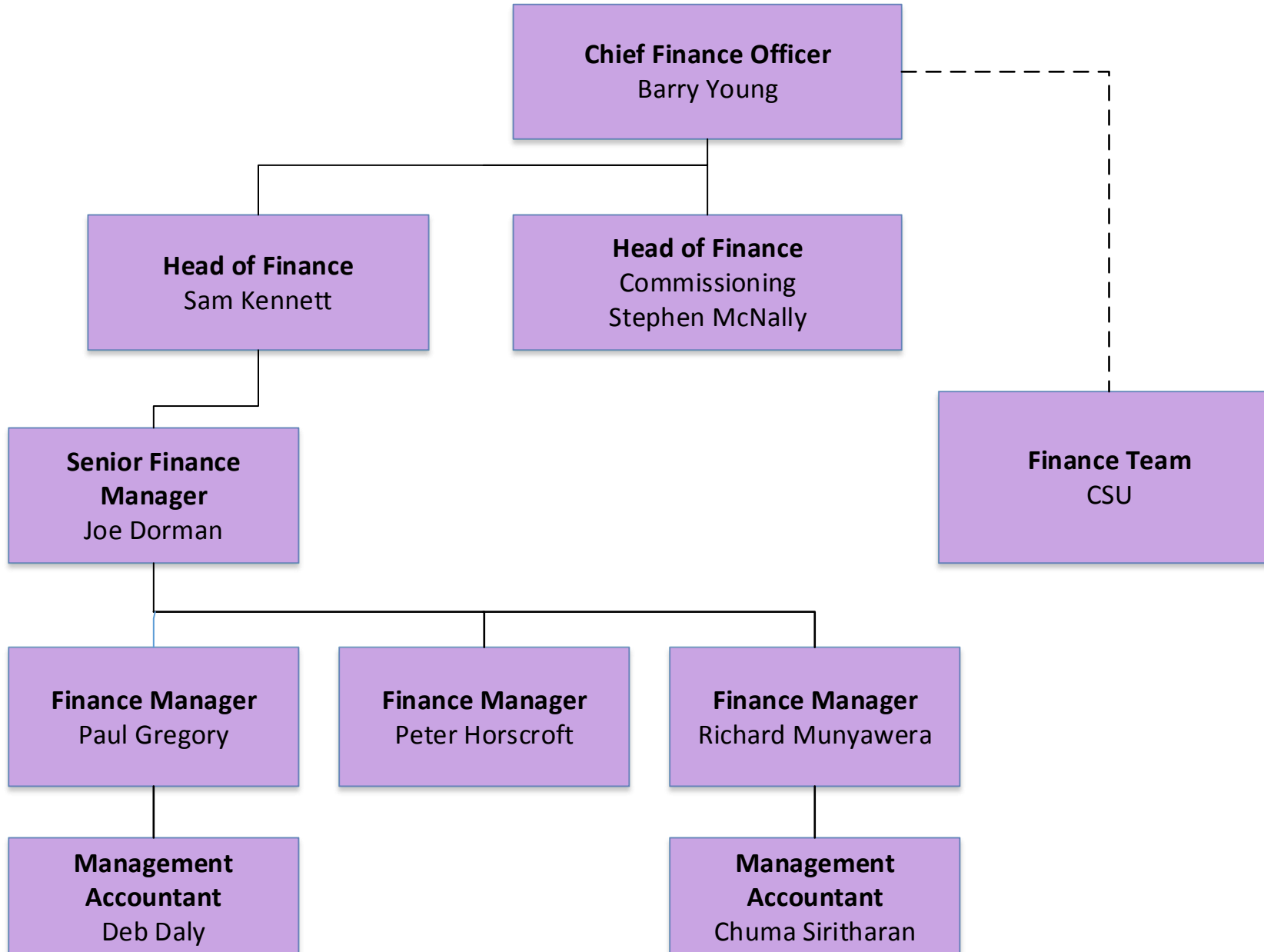
**Joint commissioning, Section 75, Mental Health Team SRO**  
**David King**

**Staff Key:**  
 Crawley CCG: Blue  
 HMS CCG: Green  
 Joint CCG: Purple  
 Vacancies/New posts: Orange



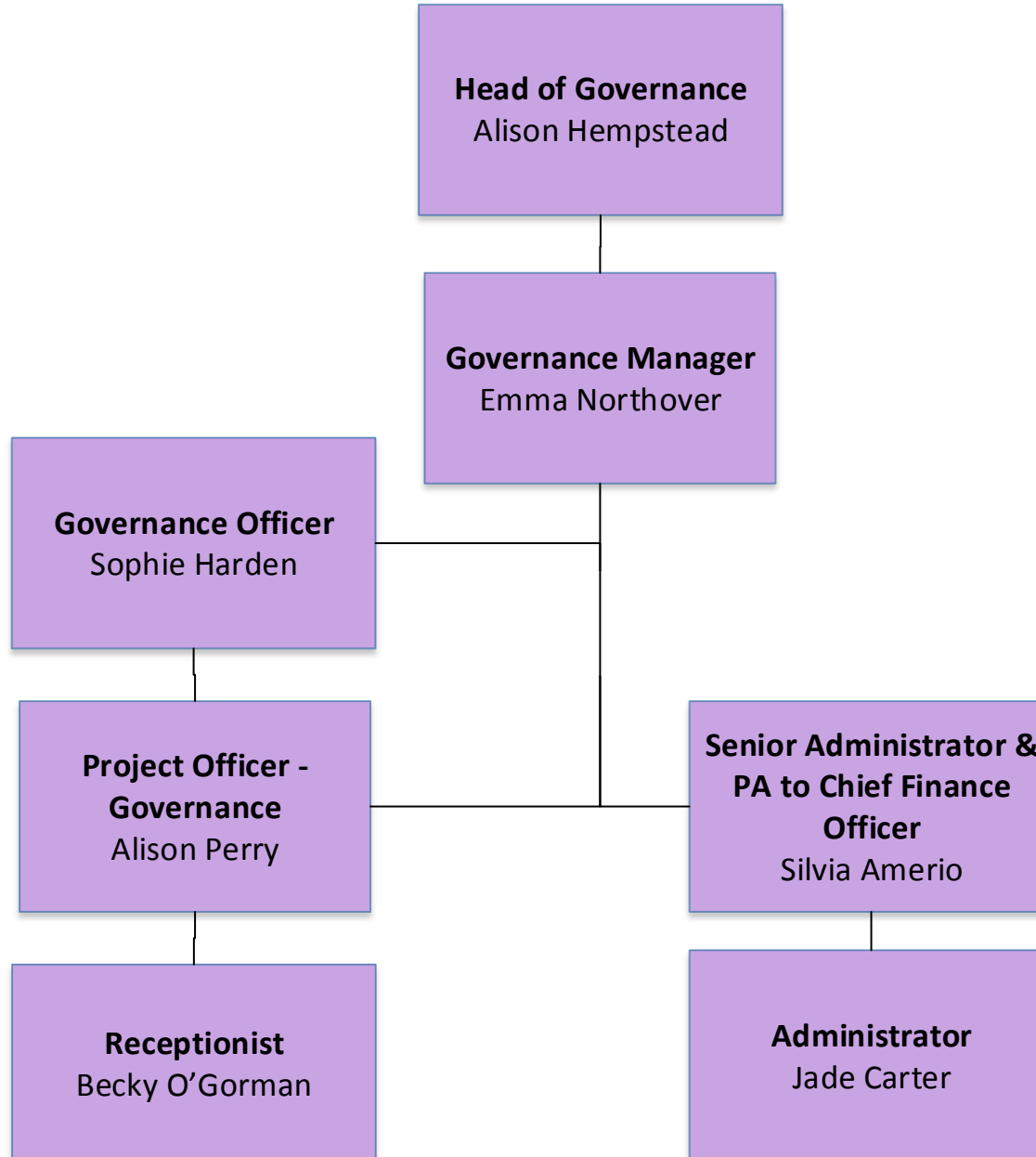
# Finance Structure

Staff Key:  
Crawley CCG: Blue  
HMS CCG: Green  
Joint CCG: Purple  
Vacancies/New posts: Orange



## Governance Structure – SRO Barry Young

**Staff Key:**  
Crawley CCG: Blue  
HMS CCG: Green  
Joint CCG: Purple  
Vacancies/New posts: Orange



# Communications & Engagement Structure SRO Geraldine Hoban

**Staff Key:**  
Crawley CCG: Blue  
HMS CCG: Green  
Joint CCG: Purple  
Vacancies/New posts: Orange

