

## Purpose and Vision

Working together to deliver the best possible healthcare for the communities of Horsham and Mid Sussex

### Focus on system-wide transformational change

Further joint health and social care commissioning, information sharing, personal budgets, care market, seven day working primary and community services, wellbeing and a safe, appropriate and managed shift of care from acute setting

## Strategic Context and Challenge

Mixed rural / urban population with large geography - access to services. Ageing population 14/15 QIPP programme of £10m (4%) Better Care Fund in 15/16 requiring £7m redeployment of funds

Challenge of relatively small commissioner and multiplicity of acute providers | Health Inequalities | Shared Management team working across two CCGs

## NHS Outcomes Framework

Three Local Priorities: End of Life Care, Care Home Admissions, Shared Decision Making

## Infrastructure and services strategy

During 2014-15 consultation with patient, public and stakeholders to develop with NHS England Surrey and Sussex Area Team plan for primary care and services estates and infrastructure. Town Based Planning.

## Performance Improvement and Finance

2015-16 – full adoption of financial planning framework. The creation of a sustainable local health economy (LHE) integrated Unscheduled Care Programme Budget. Unbundling stroke tariff: Implementation of the new specification. Split or sub tariff: as a result of agreements reached in 13/14 from a change in pathways. Risk sharing: As a result of PbR changes in 13/14 Gain sharing: As a result of agreements negotiated in 14/15

Performance improvement plans agreed in 13/14 will be delivered: Cancer waiting times, Stroke, # NOF, Neurosurgery, Waiting time in A&E, Ambulance handover times



**A4, A5 & A6. Planned Services**

**Elective Care**

MSK integrated community service including orthopaedics, pain management, rheumatology, and therapies and rehabilitation  
 Shared decision making  
 GP decision support system implementation  
 Better Care Better Value

**Cancer Care**

Early diagnosis and treatment  
 Community rehabilitation and re-ablement  
 General services, falls and stroke  
 Bedded Unit Review  
 Medicines management (including interface agreements and shared care pathways)

**A3 & C3**

Acute children's pathways implemented, work with schools  
 Sussex paediatric review outcomes commissioned  
 Acute stroke service configuration and outcomes  
 Urgent care pathways further developed to include:

- Primary/community care at the front of services acute
- Community geriatrician support
- In-reach community services into acute and care home settings

**C2. Maternity**

Review outcomes of Sussex maternity review and commission effective services working across acute and community settings

**C1& C4. Early intervention and children's mental health**

Work with West Sussex County Council to commission effective and integrated CAMHS service. Transition of Special Education Needs commissioning to CCG

**A1& C6 Wellbeing and healthy living**

Align primary and community care with wellbeing hub services  
 Focus on disease prevention – stroke and cancer  
 Practice wellbeing champions  
 Roll-out of Dementia-friendly town approach

**A2 & a4 Primary and Community Care**

Primary care development - improve capacity, develop workforce  
 Integrated services around general practice = community services including mental health provision  
 Coordinated care for vulnerable and older people  
 Work towards 7/7 access to services

**A2. Pro-Active Care**

Risk stratification of population for risk  
 Identification of people at risk of crisis and people with complex needs  
 Multidisciplinary care coordination and holistic care planning around the patient and carer

**A2. Long-term conditions**

Support for self-care through:  
 Health coaching and patient activation  
 A menu of care (supports personal budgets development)  
 Professional skills development  
 Telecare and telehealth

Specific health and care service developments – Dementia, Stroke, Diabetes, Cardiovascular and Respiratory services and End of Life Care

**A2 & A3. Mental Health**

No health without mental health – implement West Sussex Mental Health Strategy (across health & social care)

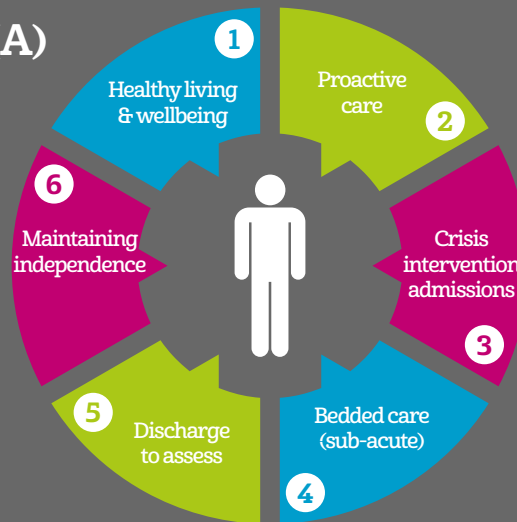
**C5. Children with long-term conditions**

Children's nurse service to support children with LTCs and families. Case coordination.  
 Respite care

**C1. Early intervention**

Work with West Sussex County Council to commission effective and integrated school nursing, health visiting service, CYPPF / Tier 1 services

**Adults (A)**



Unplanned care

**Children (C)**

